

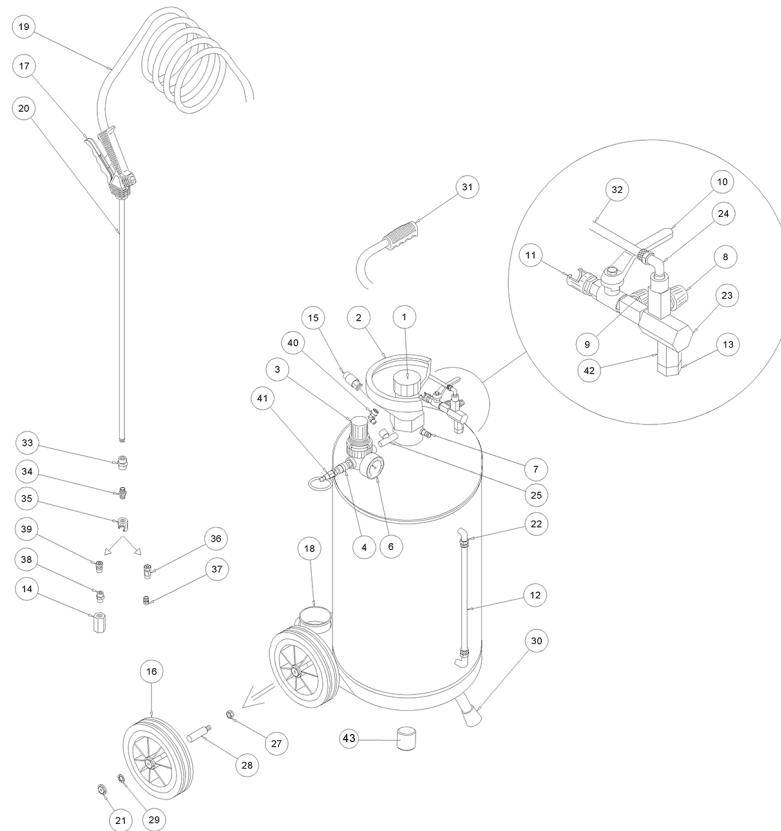


IPC

Spare parts list

Ref: NBNB00133

Model: ATOMIZER 24 LT S INOX



Ref. K	Part n.	Part n. 2	Description	Quantity	Validity		Price
					From	To	
0001	VVSC85930		CAP CON VALVOLA INOX 7 BAR	1,00			--
0002	PMVR00407		MOUTHPIECE DI RIEMPIMENT.NEUTRO INOX	1,00			--
0003	VVSF85106		REDUCTION UNIT DI PRESSIONE 1/4"	1,00			--
0004	RCGR26412		TAP CORSOIO 1/4"	1,00			--
0006	MNMN85105		PRESSURE GAUGE 1/8" D.40	1,00			--
0007	VVSC85107		VALVE DI SPURGO 1/4"	1,00			--
0008	RCGR26493		TAP REGOLATORE 1/8" MF	1,00			--
0009	RCGR26466		TAP REGOLATORE 1/4" MF	1,00			--
0010	RCGR26411		VALVE A SFERA 1/4"FF	1,00			--
0011	RCIN25780		CONNECTOR CON DADO FRESATO 1/4"	1,00			--
0012	TBBP00013		TUBE RILSAN X LIVELLO LT.24	1,00			--
0013	RCVR00077		REDUCTION X NEBULIZZATORE (INOX)	1,00			--
0014	PMVR00180		NOZZLE NEBULIZZATORE SCHIUMOGENO	1,00			--
0015	VVSC00008		VALVE SICUREZ.TARATURA 6,6BAR	1,00			--
0016	RTRT00005		WHEEL D.125 PER LT.24	1,00			--
0017	IPIP26453		GRIP SPRAYER GUN	1,00			--
0018	MPVR26458		LANCE REST	1,00			--
0019	TBBP26464		TUBE GOMMA MT.8 RACCORDATO BB	1,00			--
0020	LCPR00011		LANCE HOSE INOX mm.560 SCHIUMOGENO	1,00			--
0021	MPVR00039		WHEEL'S COVER D.125 GRIGIO	2,00			--
0022	RCVR00009		CONNECTOR ANGOLO 1/4" 8X10	2,00			--
0023	RCDS26494		CONNECTOR DI MISCELAZIONE S.91	1,00			--
0024	RCVR26497		CONNECTOR L 1/8" M C5 D. 6/ 8 NIK	1,00			--
0025	RCVR00020		CONNECTOR T 1/4" MFM	1,00			--
0027	VTDD00042		NUT AUT.M10 UNI7474	2,00			--
0028	LAFN26460		WHEEL PIN D.15 L.63 PER LT.24	2,00			--
0029	VTRS26487		WASHER DI FERMO D.15	2,00			--
0030	MPVR00053		PROD A GOCCIA D.22	1,00			--
0031	MPVR26405		KNOB IN GOMMA	1,00			--
0032	TBBP00026		TUBE RILSAN X SCHIUMOG TURBO	1,00			--
0033	RCVR85156		SLEEVE 1/4"INOX	1,00			--
0034	RCDS85158		CONNECTOR X DADO FRESATO 1/4" CH.17	1,00			--
0035	RCIN26471		NUT FRESATO 1/4"	1,00			--
0036	RCVR00065			1,00			--
0037	UGLN26457		NOZZLE MC3-06/65 1/4" INOX	1,00			--
0038	MPVR75760		REDUCTION PER UGELLO 3/8" M 1/4" F	1,00			--
0039	RCVR00072			1,00			--
0040	RCVR00021		CONNECTOR ANGOLO 1/4" 6X8	1,00			--
0041	RCVR00029		JOINT RAPIDO 1/4" MF -5380-	1,00			--
0042	RCVR00018		SLEEVE 1/4" MF	1,00			--
0043	RCVR00028		CAP 1/2" CON ESAGONO INTERNO	1,00			--