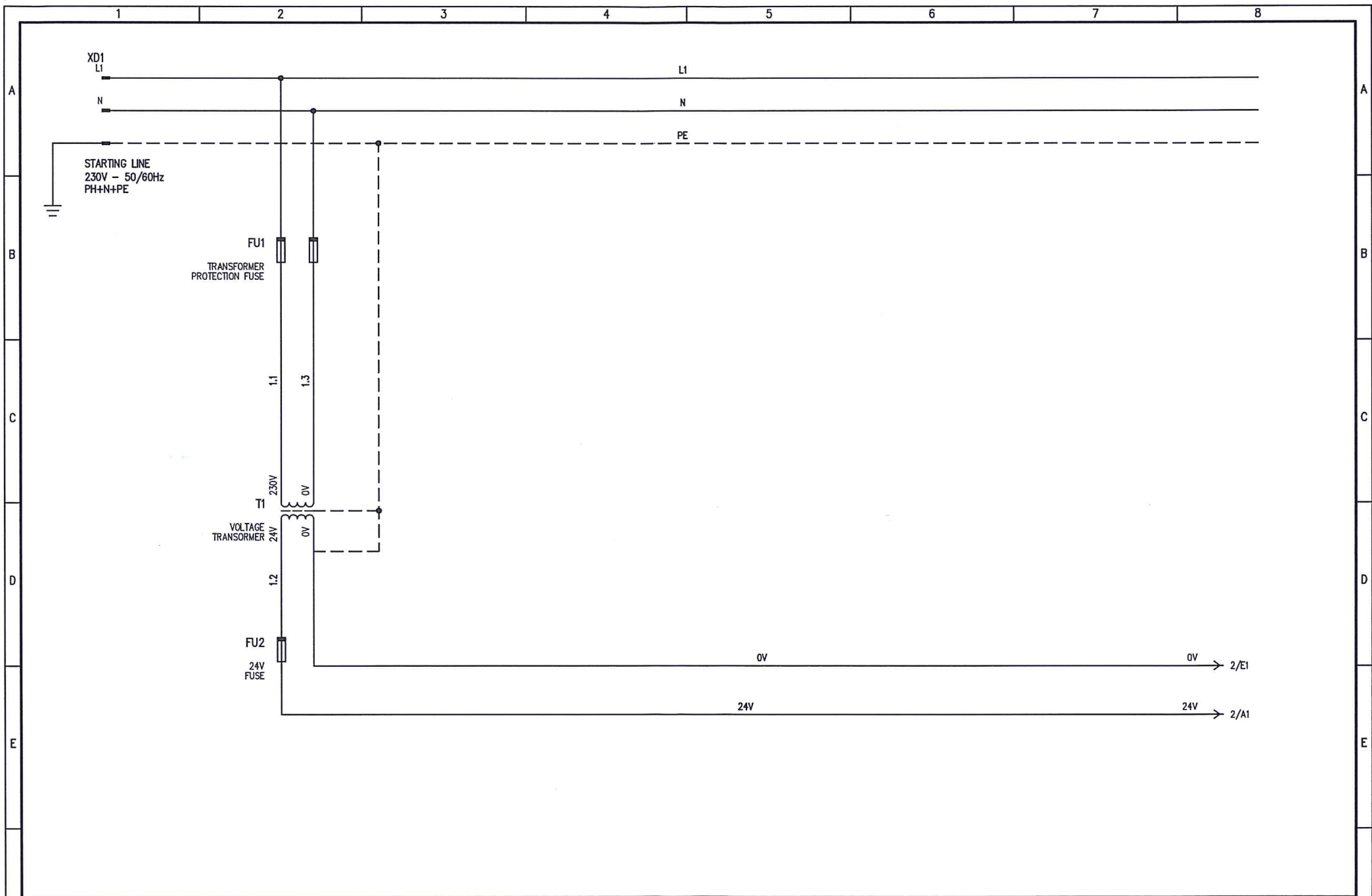


TABELLA RIASSUNTIVA DEL QUADRO

TENSIONE NOMINALE: V _n = 230 V
FREQUENZA: f = 50 Hz
POTENZE E CORRENTI: 80VA - 0,35A
PROVENIENZA E TIPO LINEE ALIMENTAZIONE:
STRUTTURA DEL QUADRO:
GRADO DI PROTEZIONE MINIMO:

PROGETTAZIONE	TENSIONE 230V 50Hz ESERCIZIO	NORME	PROTEZIONE				
SERIE	TENSIONE 24V 50 HZ COMANDI						
COMMESSA SIRMAC	TENSIONE SEGNALI						
COMMITTENTE		SIRMAC					
		COMANDO A DISTANZA UNIVERSALE FOMA					
		SC7904R00_01.dwg					
REV.	REVISIONE	DATA	FIRME	SOST. DA:	SOST. IL:	ORIGINE	FOGLIO 0
							T.F.



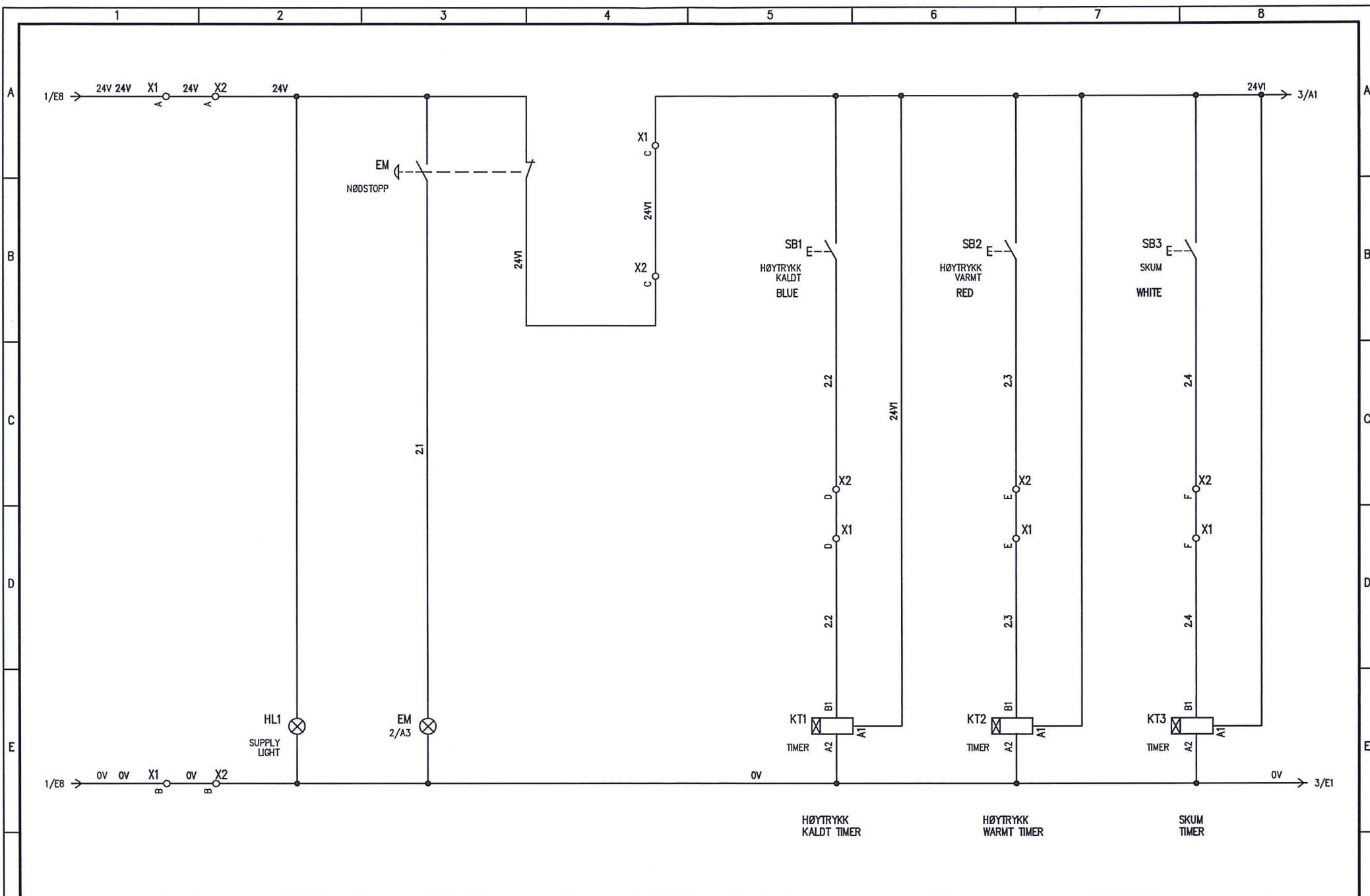
REV.	MODIFICA	DATA	FIRMA	DATA	23/07/2019
				DISEG.	
				VISTO	
				APPR.	



COMANDO A DISTANZA
 UNIVERSALE
 FOMA

dis. n° SC7904R00_01.dwg

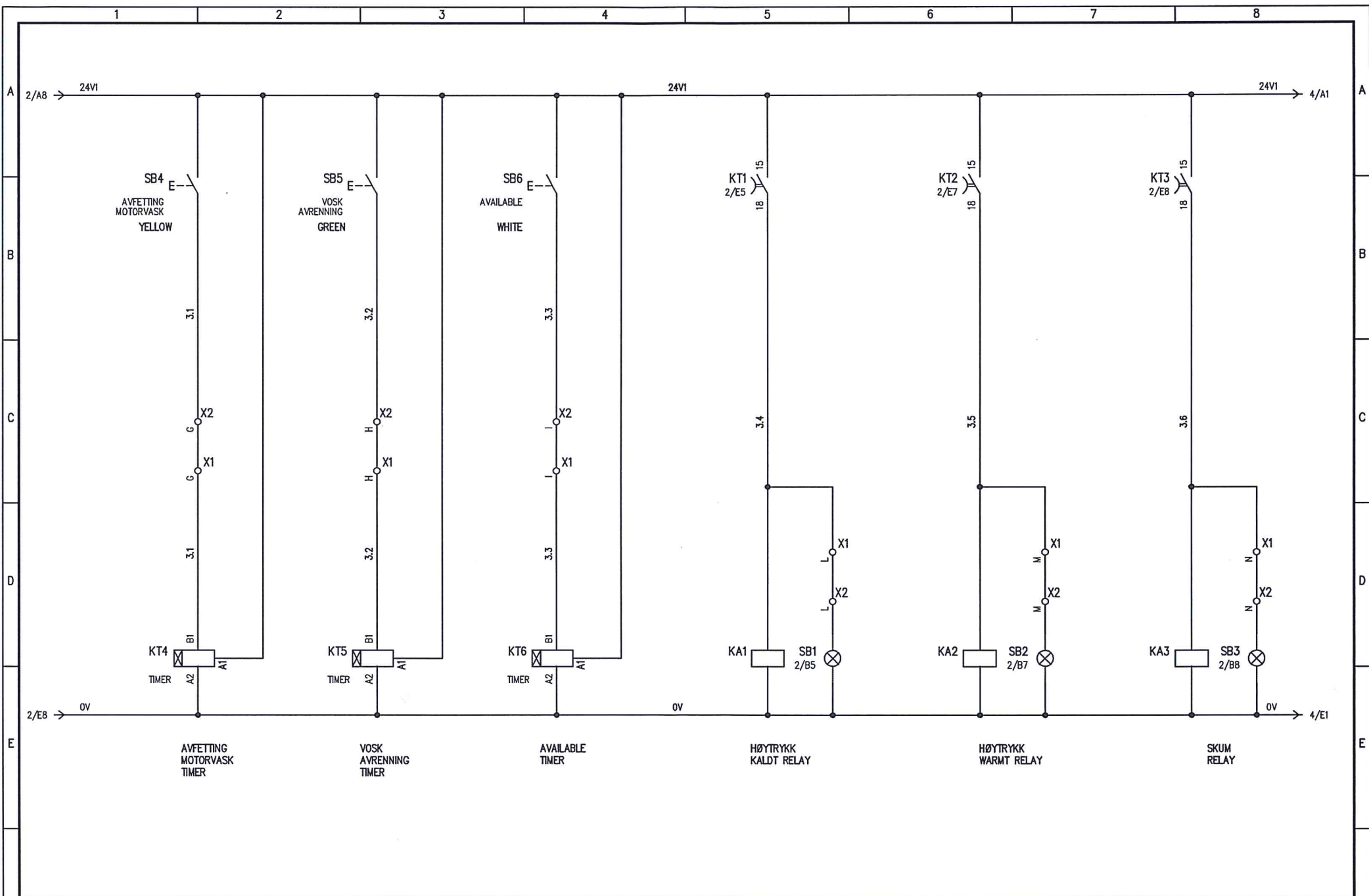
FOGLIO 1 DI
 SEGUE



DATA	23/07/2019		
DISEG.			
VISTO			
APPR.			
REV.	MODIFICA	DATA	FIRMA
1		2	



COMANDO A DISTANZA UNIVERSALE FOMA	dis. n° SC7904R00_01.dwg	FOGLIO 2 DI SEGUE
6	7	8



DATA	23/07/2019
DISEG.	
VISTO	
APPR.	

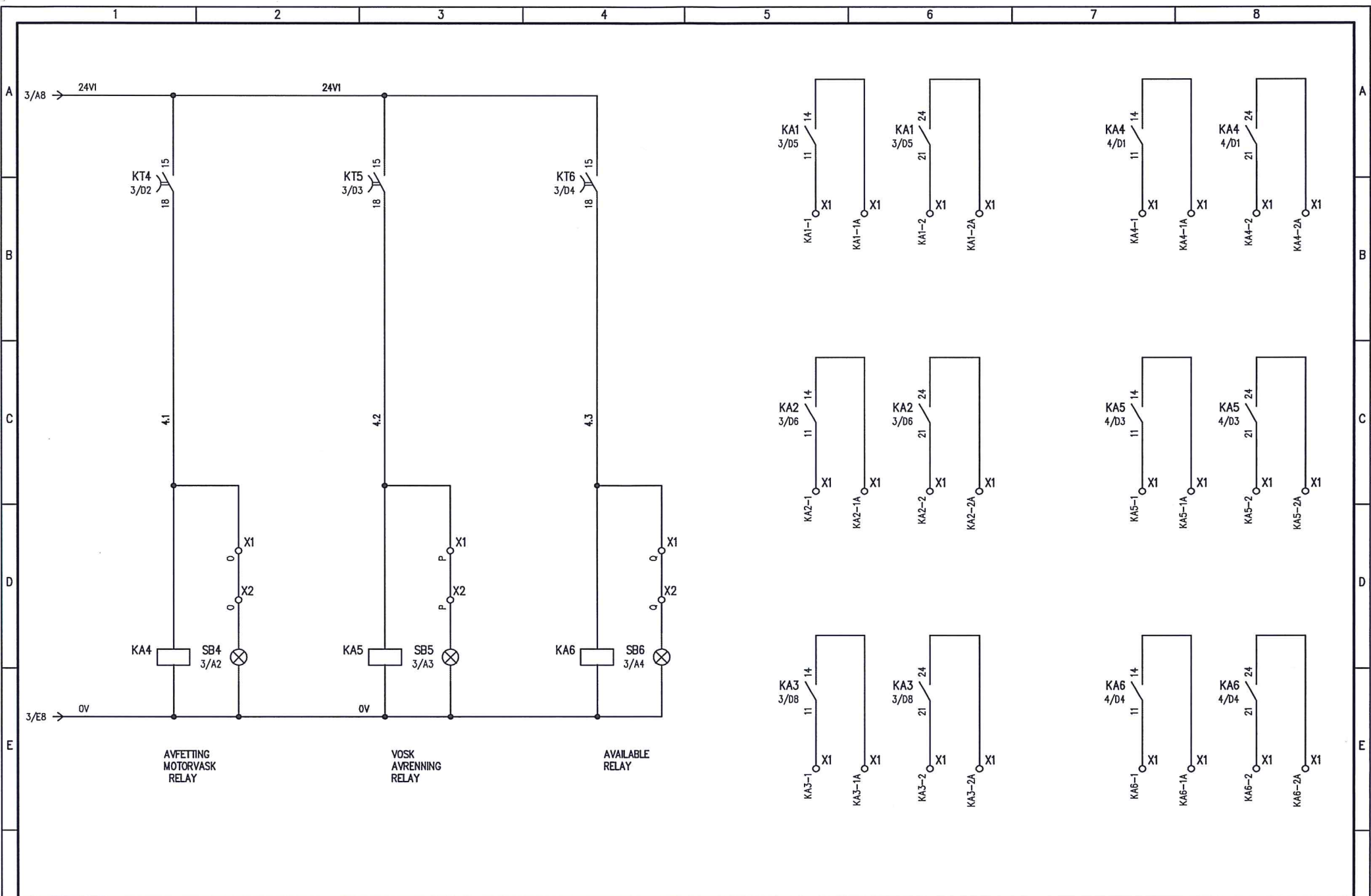


COMANDO A DISTANZA
UNIVERSALE
FOMA

dis. n° SC7904R00_01.dwg

FOGLIO 3 DI
SEGUE

REV.	MODIFICA	DATA	FIRMA
1		2	



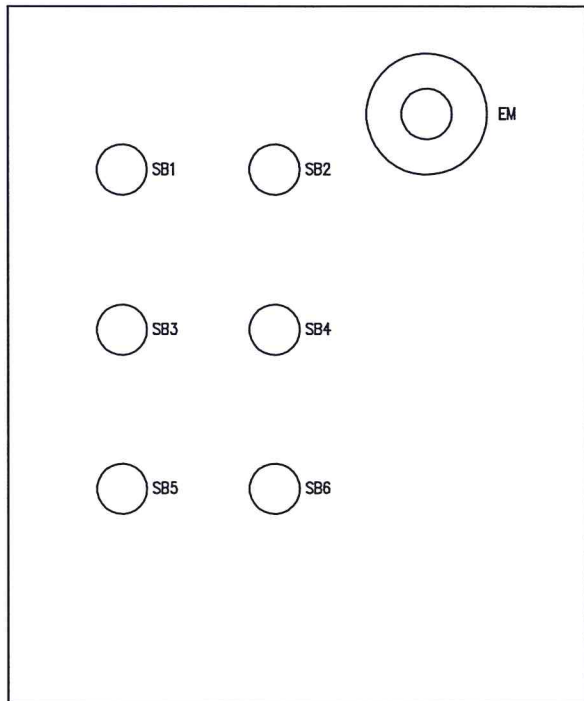
REV.	MODIFICA	DATA	FIRMA	DATA	23/07/2019
				DISEG.	
				VISTO	
				APPR.	



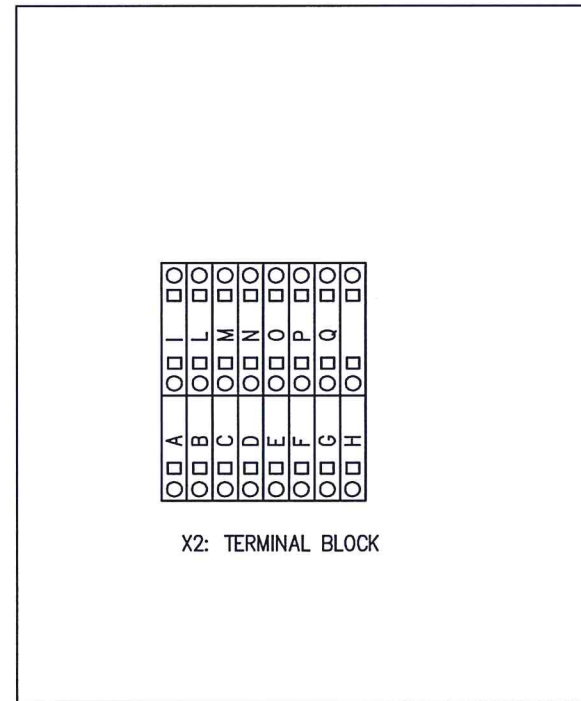
COMANDO A DISTANZA
UNIVERSALE
FOMA

dis. n° SC7904R00_01.dwg

FOGLIO 4 DI
SEGUE



LAYOUT OF EXTERNAL PANEL



X2: TERMINAL BLOCK

LAYOUT OF INTERNAL PANEL

- EM: "NODSTOPP" LUMINOUS EMERGENCY BUTTON
- SB1: "HØYTRYKK KALDT" BLUE LUMINOUS BUTTON
- SB2: "HØYTRYKK VARMT" RED LUMINOUS BUTTON
- SB3: "SKUM" WHITE LUMINOUS BUTTON
- SB4: "AVFETTING/MOTORVASK" YELLOW LUMINOUS BUTTON
- SB5: "VOSK/AVRENNING" GREEN LUMINOUS BUTTON
- SB6: AVAILABLE WHITE LUMINOUS BUTTON
- X2: INTERFACE TERMINAL BLOCK

PUSH BUTTON PANEL

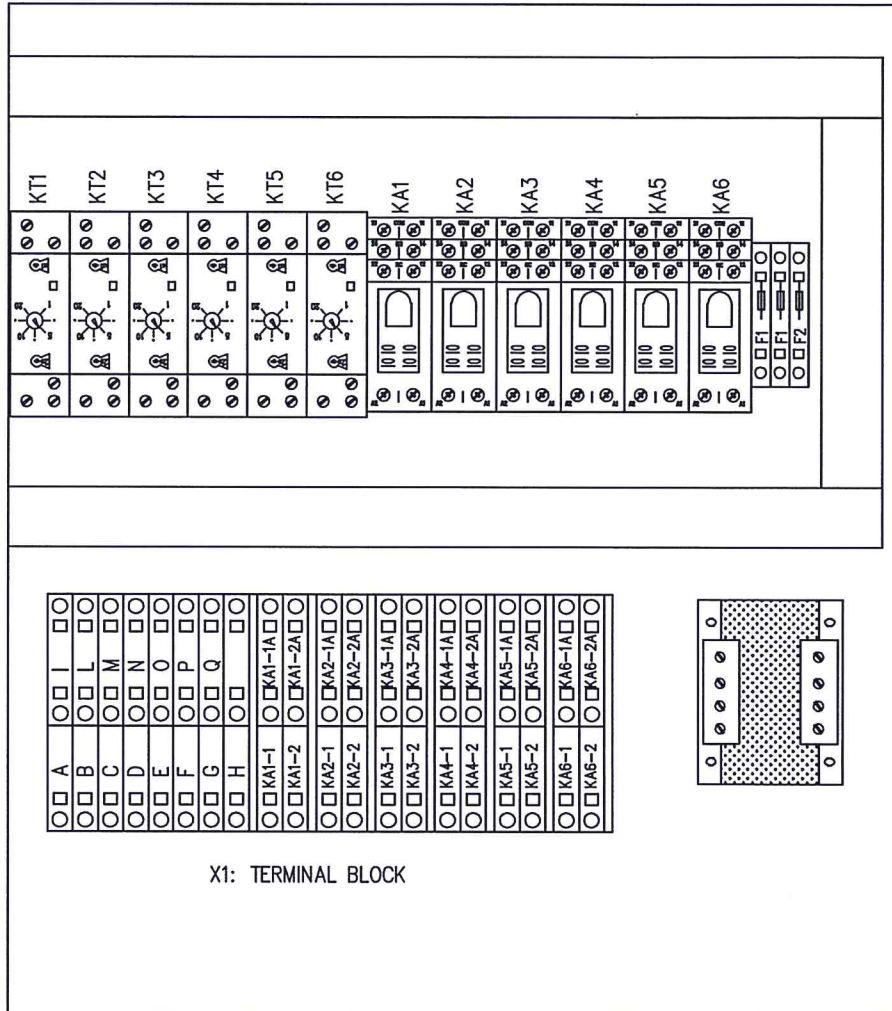
DATA	23/07/2019
DISSEG.	
VISTO	
APPR.	

SIRMAC

COMANDO A DISTANZA
UNIVERSALE
FOMA

dis. n° SC7904R00_01.dwg

FOGLIO 5 DI
SEGUE



X1: TERMINAL BLOCK

LAYOUT OF INTERNAL PANEL

RELAY BUTTON PANEL

- KT1: "HØYTRYKK KALDT" TIMER
- KT2: "HØYTRYKK VARMT" TIMER
- KT3: "SKUM" TIMER
- KT4: "AVFETTING/MOTORVASK" TIMER
- KT5: "VOSK/AVRENNING" TIMER
- KT6: AVAILABLE TIMER
- KA1: "HØYTRYKK KALDT" RELAY
- KA2: "HØYTRYKK VARMT" RELAY
- KA3: "SKUM" RELAY
- KA4: "AVFETTING/MOTORVASK" RELAY
- KA5: "VOSK/AVRENNING" RELAY
- KA6: AVAILABLE RELAY
- F1: LINE TRANSFORMER FUSES (2A)
- F2: 24V PROTECTION FESE (4S)
- T1: VOLTAGE TRANSFORMER PR: 0-230V SEC: 0-24V-28V 80VA
- X1: INTERFACE TERMINAL BLOCK

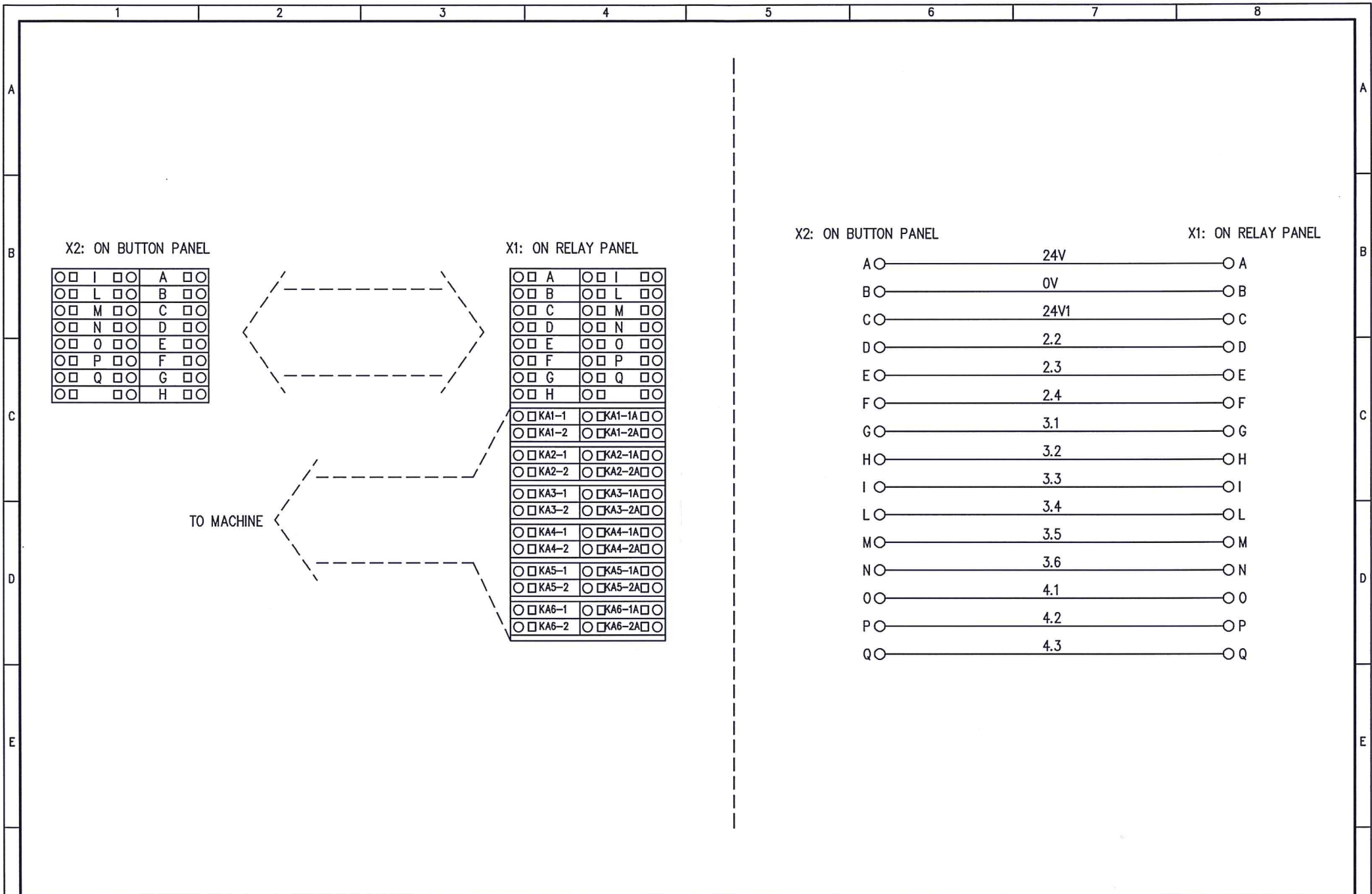
REV.	MODIFICA	DATA	FIRMA	DATA	23/07/2019
				DISSEG.	
				VISTO	
				APPR.	

SIRMAC

COMANDO A DISTANZA
UNIVERSALE
FOMA

dis. n° SC7904R00_01.dwg

FOGLIO 6 DI
SEGUE



DATA	23/07/2019
DISEG.	
VISTO	
APPR.	

REV.	MODIFICA	DATA	FIRMA
1		2	



COMANDO A DISTANZA
UNIVERSALE
FOMA

dis. n° SC7904R00_01.dwg

FOGLIO 7 DI
SEGUE